

Riding The Green Ring Route

Looking at old and new developments in sustainable building techniques, while riding through some of London's beautiful parks. The tour does not focus on one style or building type, it aims to guide the rider to view a broad range of green designs which allow for greater possibilities.

Total time including 1 hour at each building = 7.3 hrs.
 START= Regents Park* There is Pay and Display Parking along Chester Road on the Outer Circle and Inner Circle of Regents Park, between 0900 and 1830 everyday.

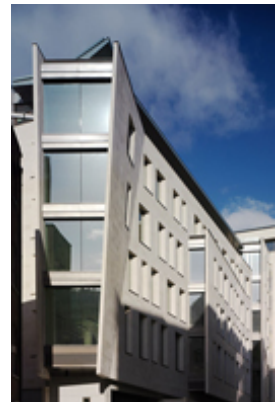
- Ride north to Regents Park Road. (5 min)
- 1. **12 Regent's Park Road Sun Sept 20** 1pm-5pm. First come basis. *12 Regent's Park Road NW1 7TX*
 Eco-refurbishment of Victorian terrace combining unique art deco interiors with maximum energy efficiency including sustainable materials, green roof and green technologies.
- Ride to the south side of Regent's Park and turn left towards Euston Square on the A501 past King's Cross and left onto Brunswick Place before Old Street. Continue and turn left at Shoreditch High St. (30 min)
- 2. **Shoreditch Prototype House Sun Sept 20**, *4 Crooked Billet Yard (off Kingsland Road, opp Cottons Gardens) E2 8AF* **Designed by** Cox Bulleid Architects
 It's not the grandest building on the Open House list – in fact it has a slightly shabby air, but that's mainly down to its innovative planted façade, which uses evergreen plants as part of its built-in 'solar control'. Underneath the plants, this is a state-of-the-art green-living machine, developed as a prototype for eco-friendly urban terraced housing of the future. Other sustainable features include a lightweight steel and timber frame with a highly insulated 'thin wall' skin.
- Ride south along Bishop's gate over the Thames, ride along the river edge to Morgan's lane to Bermondsey St. (20 min)
- 3. **4 Carmarthen Place Sun Sept 20** 10am-4pm. First come basis, queuing outside if necessary. **Designed by** Doherty, Emma & Menage, Amanda/Architects in Residence.

One of two eco wooden houses and artist's studio with sedum roof. New to the UK and prefabricated in Europe to exacting designs, the complete panels were craned into site.

- Head South on Bermondsey Rd to Tower Bridge Rd, turn left on New Kent Rd, then through Burgess Park to Wells way and left to Coleman Rd. (30min)
- 4. **3 Acorns Retro Eco-house Sun Sept 20** Sun - 10am-5pm. Last entry 4.30pm
 2 Coleman Road, Camberwell SE5 7TG
 Victorian terrace two-bedroomed house, converted into London's first retro carbon-negative home. It sells more green electricity to national grid than it imports fossil fuels. Sustainable features include solar electric and hot water panels, wind-turbine, wood-burner, rain-harvester, range LED bulbs. Display on green-lifestyle. Owner is leading eco-author and business eco-auditor.
- Ride to Burgess park and turn right onto Camberwell Rd, onto St Georges Rd, over Westminster Bridge, up Parliament St to Regent St. (35 min)



- 5. **16 New Burlington Place Sun - 10am-5pm.** First come basis, queuing outside if necessary..Last entry 4.30pm
 16 New Burlington Place W1S 2HX **Designed by** Trehearne Architects



- Behind a retained facade, The Crown Estate's new headquarters draws inspiration from this context with an architecture that is contemporary and dramatic whilst simultaneously addressing sensitive environmental issues. Hard landscaping and public art help to enhance a previously unwelcome urban space ð Michael Bleyenbergs sculpture New Burlington Flare Three Prisms stands by the building. Sustainable features include photovoltaic cells, chilled ceilings. 2006
- Ride through Hyde Park to return to Regent's Park. (20 min).